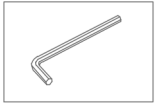
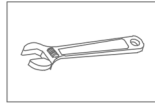


## Deck-Mounted Kitchen Faucet Installation Manual

### Tools Required



Hexagon Wrench



Wrench



Plumber's Tape

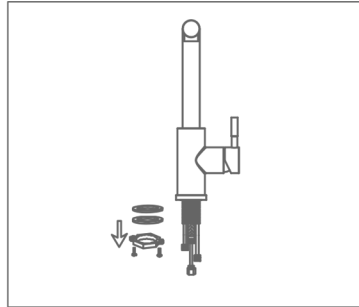
### Notes

1. Please check that all components are present.
2. Before installation ensure that all feed lines are clear of debris and on/off valve is present.
3. Ensure water pressure is between 20-125 PSI (this includes a combination of hot and cold inlet lines).
4. Pictures in the manual are for general information and do not represent the purchased product.
5. If you plan on leaving your house vacant, please ensure to shut off the main water supply.

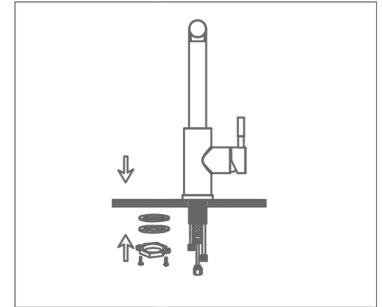
### Daily Maintenance

1. Use a soft cloth with diluted vinegar to remove hard water stains.
2. Check the aerator for calcium build up if the water pressure is not optimum.
3. DO NOT use caustic cleaning products on the products as it will break down the finish and will void the warranty of the product.
4. Acceptable cleaners include vinegar or mild non-abrasive liquid detergents.

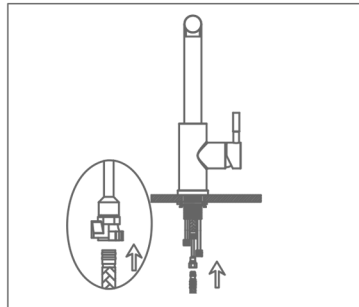
### Installation



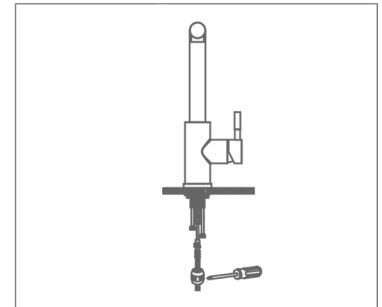
1. Remove the mounting hardware from the faucet.



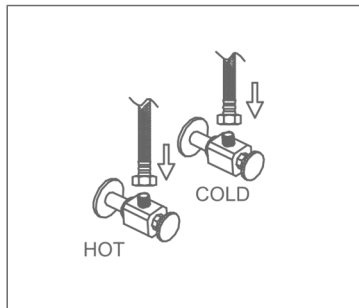
2. Place escutcheon plate on the holes if necessary. Slide faucet through the countertop hole. Re-install the mounting hardware.



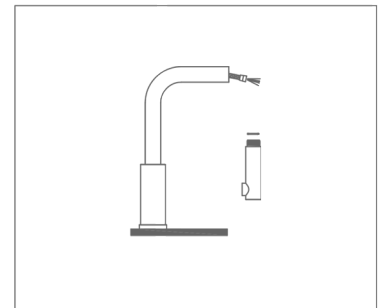
3. Push the flexible water line until you hear a click.



4. Install the weight for the retractable head 15" below the countertop.



5. Attach the other end of the flexible water supply lines to the water supply valve.



6. After installing the faucet, remove the retractable head and turn the faucet on for one minute to flush the debris in the lines. Install the head after flushing.