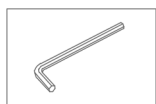
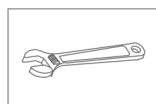


## Deck-Mounted Bathroom Faucet Installation Manual

### Tools Required



Hexagon Wrench



Wrench



Plumber's Tape

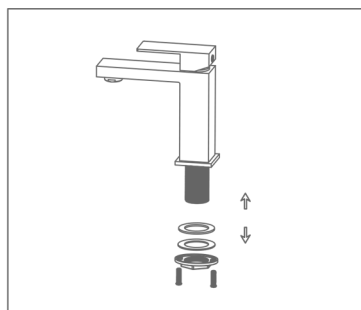
### Notes

1. Please check that all components are present.
2. Before installation ensure that all feed lines are clear of debris and on/off valve is present.
3. Ensure water pressure is between 20-125 PSI (this includes a combination of hot and cold inlet lines).
4. Pictures in the manual are for general information and do not represent the purchased product.
5. If you plan on leaving your house vacant, please ensure to shut off the main water supply.

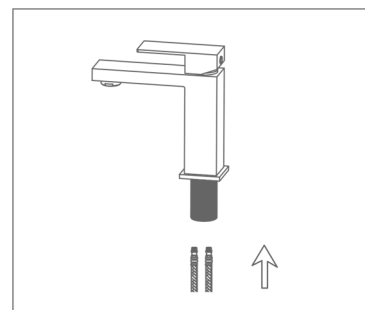
### Daily Maintenance

1. Use a soft cloth with diluted vinegar to remove hard water stains.
2. Check the aerator for calcium build up if the water pressure is not optimum.
3. DO NOT use caustic cleaning products on the products as it will break down the finish and will void the warranty of the product.
4. Acceptable cleaners include vinegar or mild non-abrasive liquid detergents.

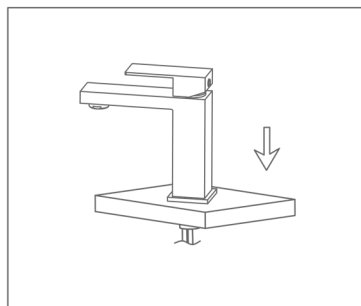
### Installation



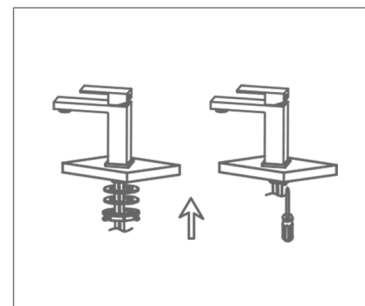
1. Remove the mounting hardware from the faucet.



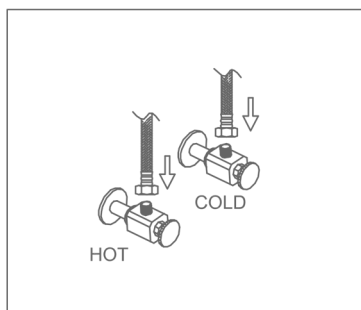
2. Hand-tight the flexible water supply lines to the faucet. DO NOT use a wrench to tighten the lines as this may cause damage.



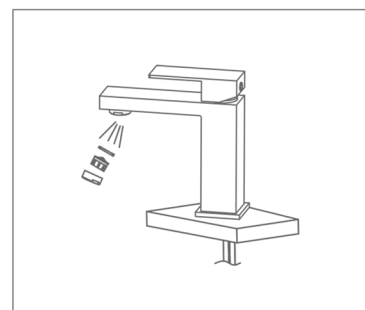
3. Slide the faucet in the centre hole with the escutcheon plate.



4. Re-install the mounting hardware from first step.



5. Attach the other end of the flexible water supply lines to the water supply valve.



6. After installing the faucet, remove the aerator and turn the faucet on for one minute to flush the debris in the pipes. Install the aerator after flushing.