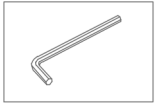
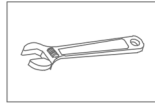


Floor-Mounted Bath Filler Installation Manual

Tools Required



Hexagon Wrench



Wrench



Plumber's Tape

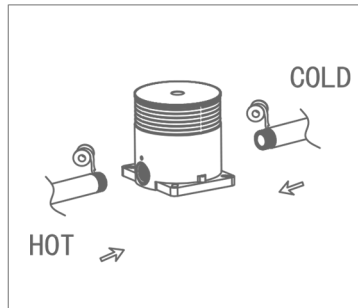
Notes

1. Please check that all components are present.
2. Before installation ensure that all feed lines are clear of debris and on/off valve is present.
3. Ensure water pressure is between 20-125 PSI (this includes a combination of hot and cold inlet lines).
4. Pictures in the manual are for general information and do not represent the purchased product.
5. If you plan on leaving your house vacant, please ensure to shut off the main water supply.

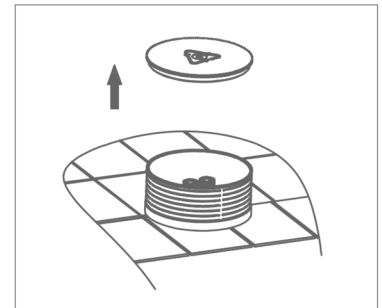
Daily Maintenance

1. Use a soft cloth with diluted vinegar to remove hard water stains.
2. Check the aerator for calcium build up if the water pressure is not optimum.
3. DO NOT use caustic cleaning products on the products as it will break down the finish and will void the warranty of the product.
4. Acceptable cleaners include vinegar or mild non-abrasive liquid detergents.

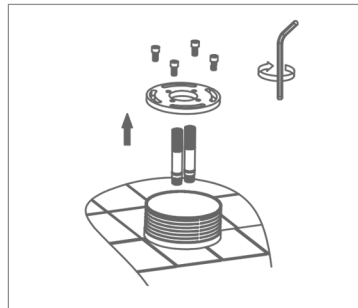
Installation



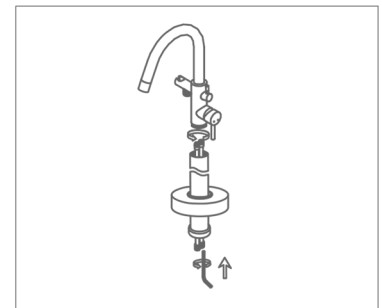
1. Apply plumbers tape to the inlets. Attach supply lines to the hub.



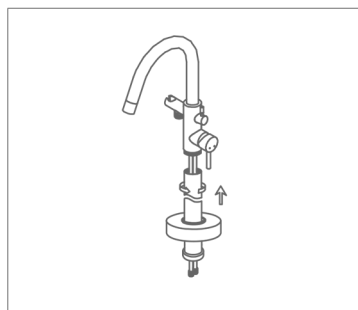
2. Take the hub cover off to access the water supply lines.



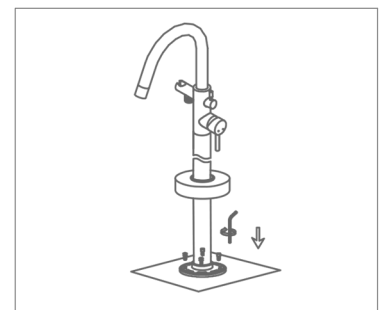
3. Install the plate and hardware included.



4. Tighten the water lines to the base and head. Slide the decorative cover over the body.



5. Twist the faucet head onto the body.



6. Lift the decorative cover and fix the faucet plate to the hub with the included hardware.